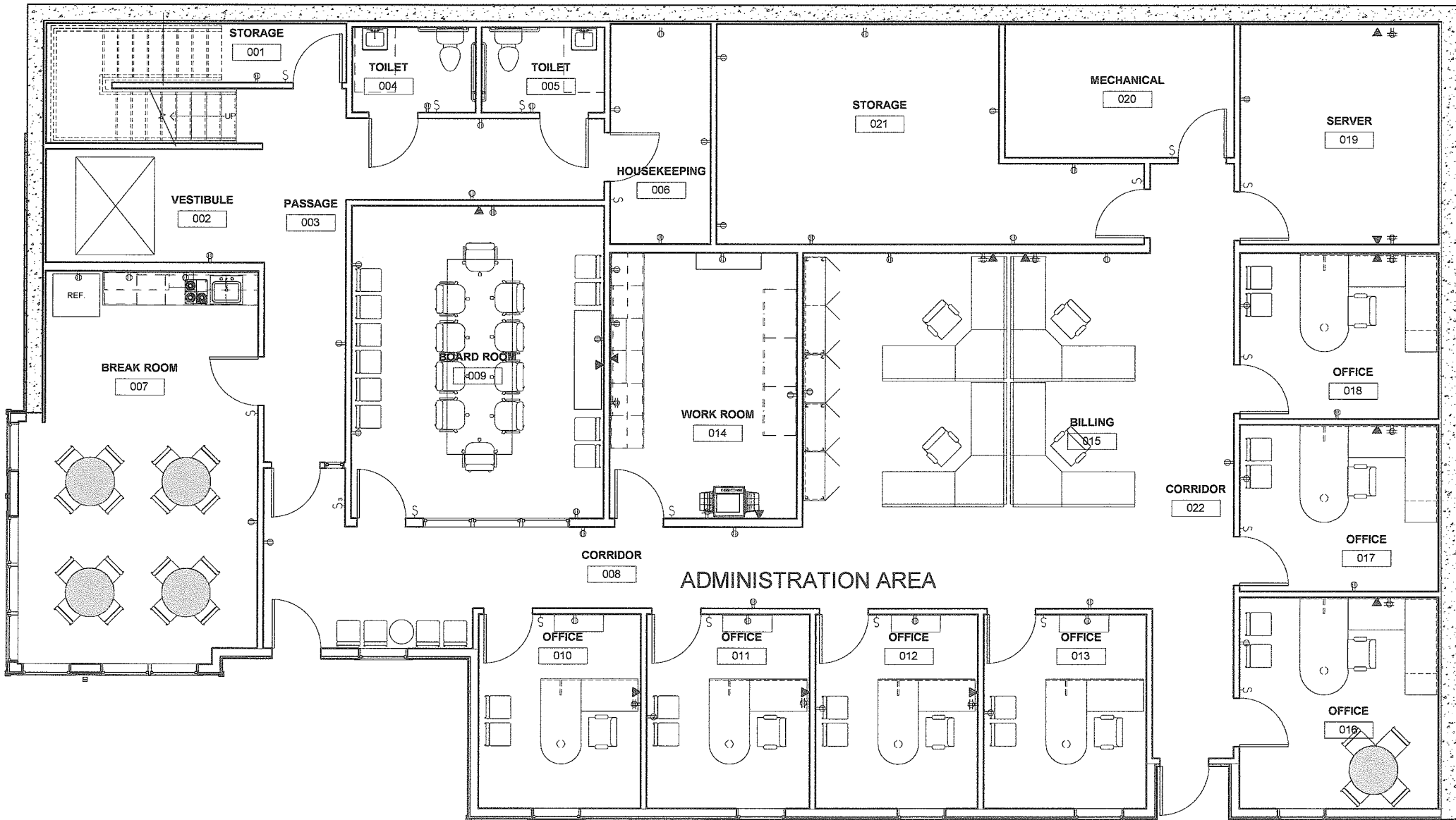




ELECTRICAL LEGEND	
[Symbol]	SWITCH, Single
[Symbol]	SWITCH, Double
[Symbol]	SWITCH, 3-Way
[Symbol]	ELECTRICAL OUTLET, Duplex
[Symbol]	ELECTRICAL OUTLET, Quadplex
[Symbol]	DATA OUTLET, 2 Port



① BASEMENT LEVEL ELECTRICAL
1/4" = 1'-0"

BIRCH PENUE ASSOC
2805 Crescent Ave
Birmingham, AL 35209
Phone: 205.870.1875
Fax: 205.870.3255
www.bpa.net

CAPSTONE
REPLACEMENT CLINIC
PARRISH, AL

REVISIONS & ADDS	
No.	Description

Date: _____
Drawing Title: BASEMENT ARC ELEC
Drawn by: CTV
Author: _____
BPA Project No. _____
Scale: _____
Sheet _____ of _____

Drawing No. **A9**